



**AF238**

**AUDEX<sup>®</sup>**

INDUSTRIAL DEWATERING



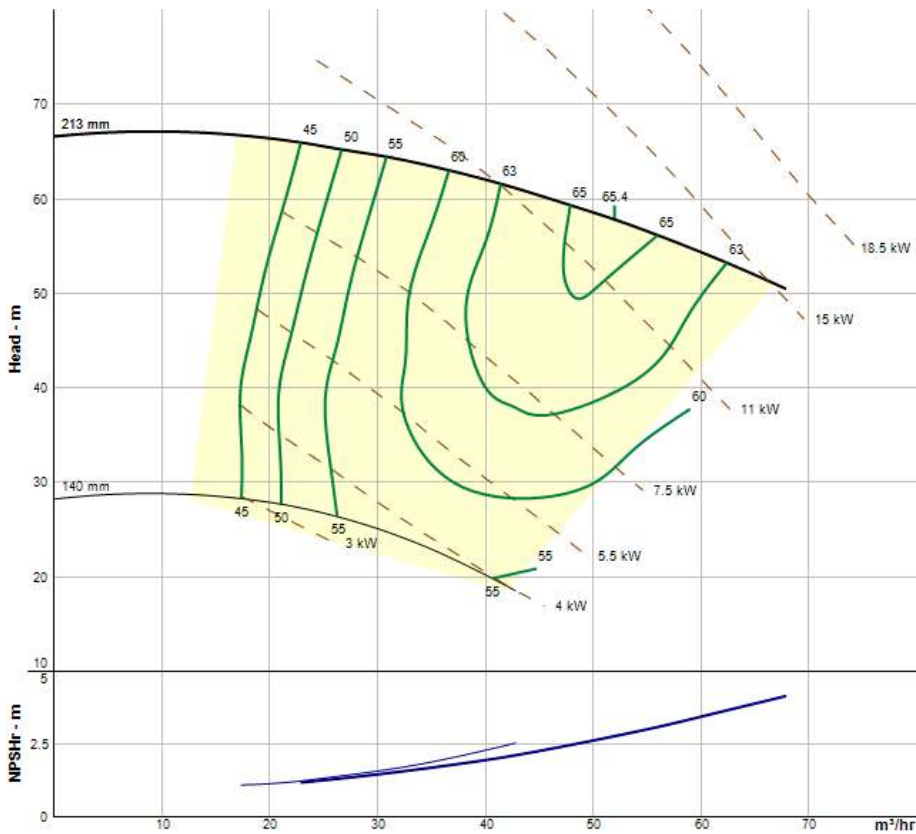
[intraxglobal.com](http://intraxglobal.com)

# AF238

## About Audex AF238

The Audex AF238 is a floating vertical centrifugal pump designed with the motor located outside the fluid. Its construction in metallic materials results in high resistance to challenging fluids. Simultaneously, the absence of a mechanical seal ensures proper operation in abrasive applications or those involving suspended solids, eliminating the need of frequent repairs. The floating Audex pump provides an optimal operational position, preventing the suction of bottom sludge and surface solids. Its portable design enables easy handling within the pool, as well as quick and simple relocation to other plant areas.

## Performance Curves



## Audex AF238

The floating Audex can be constructed in stainless steel (CF8M), duplex (CD4MCU), or cast steel. Sealing system with expeller. Available motor options include 11 kW, 15 kW, and 18.5 kW.

## Specification

Max Capacity	68 m³/hr
Max Head	67 mts.
Max Motor Speed	2900 RPM
Suction Size	3"
Discharge Size	2"
Max solids size	5 mm
Weight	with floating 250 kg.
	without floating 210 kg.
Minimum fluid depth	with floating 500mm.
	without floating 300 mm.

## Dimensions

